

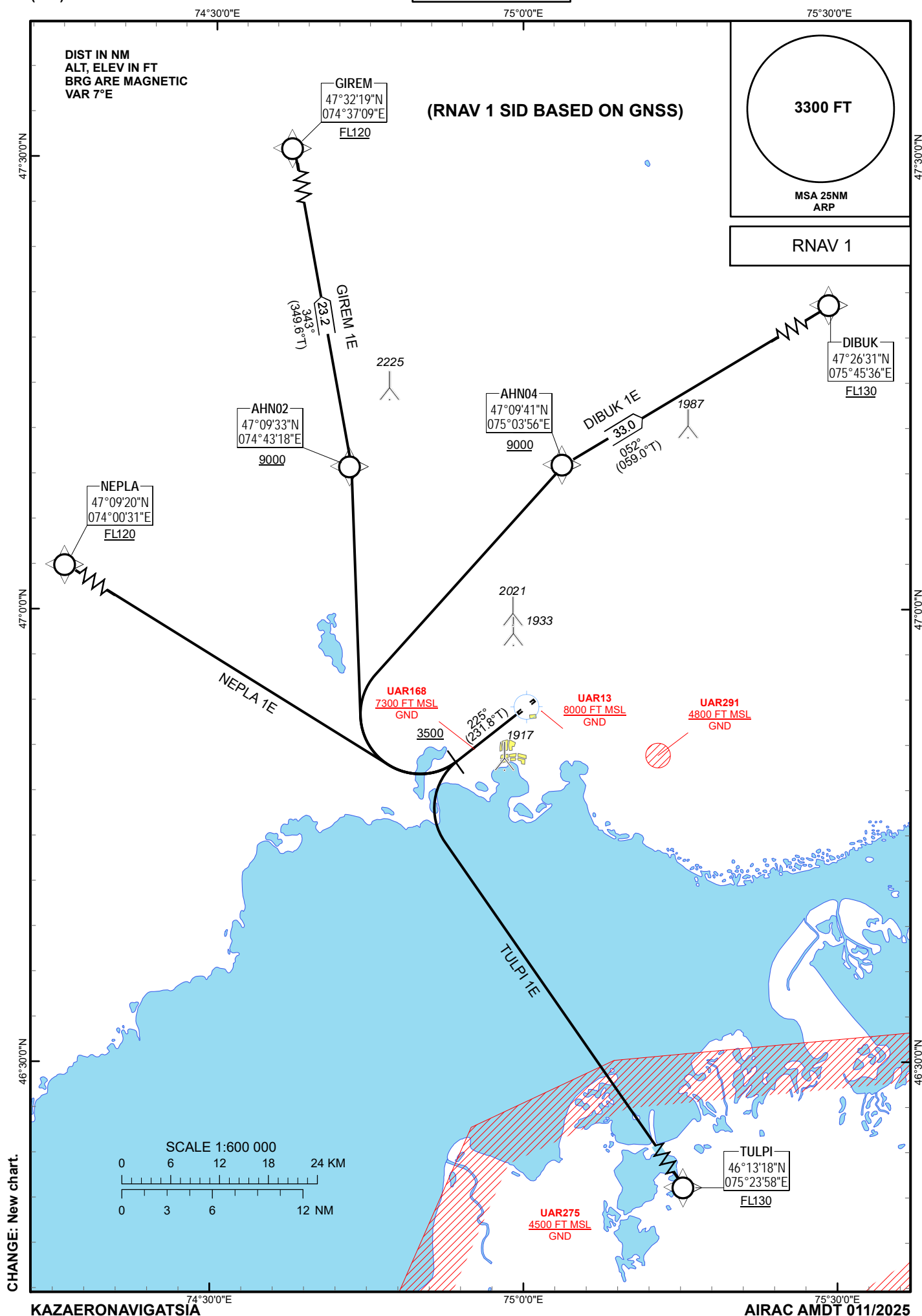
STANDARD DEPARTURE
CHART - INSTRUMENT
(SID) - ICAO

TRANSITION ALTITUDE
10000 FT

BALKASH TOWER 128.0
BALKASH ATIS (EN) 126.6
BALKASH ATIS (RU) 126.2

DIBUK 1E, GIREM 1E,
NEPLA 1E, TULPI 1E

BALKHASH
RWY 22



TABULAR DESCRIPTION

DIBUK 1E RWY22											
Serial Number	Path Descriptor	Waypoint Identifier	Fly - over	Course M°(T°)	Magnetic Variation(°)	Distance (NM)	Turn Direction	Altitude (FT)	Speed (KT)	VPA (°)	Navigation Specification
010	CA	-	-	225(231.8)	+7.1	-	-	+3500	-	1.9	RNAV 1
020	DF	AHN04	-	-	+7.1	-	R	+9000	-	1.9	RNAV 1
030	TF	DIBUK	-	052(059.0)	+7.1	33.0	R	+FL130	-	1.9	RNAV 1

GIREM 1E RWY22											
Serial Number	Path Descriptor	Waypoint Identifier	Fly - over	Course M°(T°)	Magnetic Variation(°)	Distance (NM)	Turn Direction	Altitude (FT)	Speed (KT)	VPA (°)	Navigation Specification
010	CA	-	-	225(231.8)	+7.1	-	-	+3500	-	1.9	RNAV 1
020	DF	AHN02	-	-	+7.1	-	R	+9000	-	2.1	RNAV 1
030	TF	GIREM	-	343(349.6)	+7.1	23.2	-	+FL120	-	1.9	RNAV 1

NEPLA 1E RWY22											
Serial Number	Path Descriptor	Waypoint Identifier	Fly - over	Course M°(T°)	Magnetic Variation(°)	Distance (NM)	Turn Direction	Altitude (FT)	Speed (KT)	VPA (°)	Navigation Specification
010	CA	-	-	225(231.8)	+7.1	-	-	+3500	-	1.9	RNAV 1
020	DF	NEPLA	-	-	+7.1	-	R	+FL120	-	1.9	RNAV 1

TULPI 1E RWY22											
Serial Number	Path Descriptor	Waypoint Identifier	Fly - over	Course M°(T°)	Magnetic Variation(°)	Distance (NM)	Turn Direction	Altitude (FT)	Speed (KT)	VPA (°)	Navigation Specification
010	CA	-	-	225(231.8)	+7.1	-	-	+3500	-	1.9	RNAV 1
020	DF	TULPI	-	-	+7.1	-	L	+FL130	-	2	RNAV 1

WAYPOINT COORDINATES

Waypoint Identifier	Coordinates	
AHN02	470933.00N	0744318.00E
AHN04	470941.00N	0750356.00E
DIBUK	472631.00N	0754536.00E
GIREM	473219.00N	0743709.00E
NEPLA	470920.00N	0740031.00E
TULPI	461318.00N	0752358.00E